

FEET — Friends Enhancing Emmet Transit

Public Transportation in Emmet County



WHAT'S GOING ON?

Your neighbors are working to build Emmet Transit, a countywide transportation system that would provide limited fixed route and “dial-a-ride” bus service.

Emmet County voters will vote on this issue.

This is up to you.

WHAT WOULD I GAIN FROM IT?

A public transportation system in our community would fill many needs:

- Provide dependable transportation to work, school, appointments, or shopping
- Give people in the community greater access to cultural, leisure, and recreational activities
- Reduce local traffic congestion
- Allow access to downtown shopping, without crowded parking
- Reduce energy consumption and harmful greenhouse gas emissions

WHO WOULD RUN IT?

Emmet County will run the system itself, or create a Transportation Authority with a board of directors. Alternatively, our participation with Straits Regional Ride could be expanded as a multi-county transit authority.

WHEN WILL IT START?

With Emmet County voter approval in early 2011, it could start running late in 2011. Expansion of Straits Regional Ride service is possible at any time.

WHO IS THIS FOR?

- Anybody and everybody! This includes people tired of the high cost of gasoline and maintaining a vehicle, traffic congestion, and even the dangers of driving in bad weather. Seniors, youth, people with disabilities, college students, and families with fewer cars than workers.
- Racks for bikes or skis and snowboards will give everyone greater access to our local outdoor amenities.
- Everyone benefits when public transit reduces pollution from private vehicles.

WHAT WILL THIS COST ME?

- Fares to ride would be kept affordable, between \$2-\$3.
- The plan calls for placing a .30 mill millage request on the 2011 ballot. Annually, for the average homeowner this is roughly the price of one takeout pizza.
- Every tax dollar invested in public transportation generates \$6 or more in economic returns.
- Additional support will come from County, State and Federal funds.

WHY ARE WE DOING THIS?

- Public transportation not only helps create and maintain jobs, it also moves people to and from their jobs.
- Numerous studies have been done in our community over the past twenty years showing the consistent need for public transportation. For details: www.emmettransit.org
- The use of public transportation lowers household expenses and frees up more income for other needs.
- 21% of area households have someone that doesn't drive for numerous reasons or limits their driving due to weather or nighttime.

WHAT DOES THE EMMET PLAN CALL FOR?

- Development of a public transportation system in three phases, through the creation of dial-a-ride and limited fixed routes.
- Creation of a public transportation authority or a county department of transportation.
- Secure funding through State and Federal sources for startup and operations.
- Fold the Friendship Center bus system into the new system and coordinate with Charlevoix Transit and Straits Regional Ride (SRR).
- Expansion of SRR as a multi-county system is also under consideration.

WHEN CAN WE VOTE ON THIS?

We are targeting a millage vote in 2011.

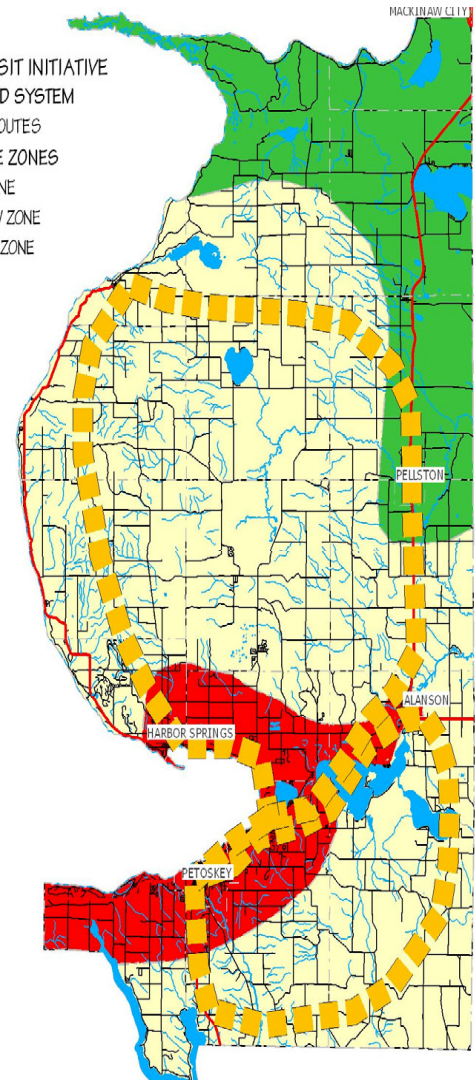
WHAT IF I HAVE SUGGESTIONS OR WANT TO GET INVOLVED? YOU CAN HELP AND YOUR FEEDBACK IS NEEDED!

If you have any suggestions, want a presentation to your group, or want to help move the proposal forward, please contact FEET- **Friends Enhancing EMMET TRANSIT**.

- Martha Lancaster, Char-Em United Way (Chairperson)
(231)487-1006, FEET@charemunitedway.org
- Terry Newton, Harbor Hall, Inc. (Chairperson)
(231)347-5511, terryn@harborhall.com

EMMET TRANSIT INITIATIVE PROPOSED SYSTEM

- FLEX-ROUTES
- SERVICE ZONES
- RED ZONE
- YELLOW ZONE
- GREEN ZONE



WHEN WILL IT RUN?

The proposed hours of operation would be about 12 hours a day Monday through Friday with weekend hours. Hours would be adjusted to meet the local demands.

This information is presented by FEET- Friends Enhancing EMMET TRANSIT. FEET is an offshoot of Emmet 20/20 and the Charlevoix Emmet Human Services Coordinating Body, Transportation Work Group.
For more info- www.emmettransit.org